



_TECHNOLOGIES

_PRODUCTS & SOLUTIONS

_SAP APPLICATIONS

SCM FOR THE CHEMICAL INDUSTRY

A decision leading supply chain management dashboard



Gathering solid decisions for changing the supply chain based on hard facts

Clariant

Clariant is a global leader in the field of specialty chemicals. From vibrant colors in luxury goods to less visible additives which increase the value of industrial and consumer products, Clariant is a preferred partner for its customers. Clariant is represented on five continents by more than 100 group companies employing over 20,000 people. Headquartered in Muttenz near Basel, Switzerland, Clariant had a turnover of about CHF 8.5 billion in 2007. Clariant's products play a key role in their customers' manufacturing and treatment processes.



Challenges

- Company-wide reporting for different SCM key figures:
 - _ Planning accuracy
 - _ Excess and shortage planning
 - _ Stock cover range
 - _ Stock development over time – valued and non-valuated
 - _ OTIF and EOTIF
- Combining different data systems and sources to gather all information necessary
- Creating a dashboard which presents all important data on one screen
- Possible root cause analysis



Graphic 1

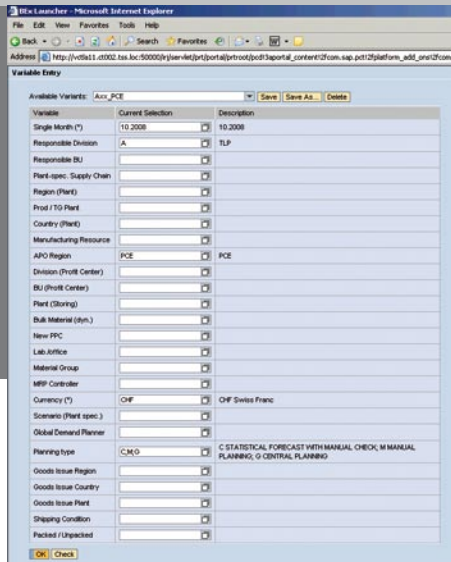
Solution

Camelot and Clariant developed a supply chain management dashboard which represents all information needed from different charts on one page, so each planner can easily access all relevant data with only one look (compare graphic 1). This implementation approach ensures the leverage of planning relevant decisions.

Data Selection

In the first step, a planner is able to set different variables based on his requirements and authorizations (see graphic 2). While only selecting data he really needs, expensive time can be saved and the dashboard will just be one click away.

A decision leading supply chain management dashboard



Graphic 2

Graphic 3

Region C	Stock cover FG SEP	Stock cover FG OCT	Stock cover FG NOV	Consumption FG NOV	Inventory Quantity FG NOV	Inventory Value FG NOV	Stock Cover change Last vs. Prev. Month
49,56	57,64	64,80	3.282.819,53	7.089.873,03	40.974.788,01	6,96	
49,54	52,28	55,55	31.188.545,16	57.755.861,93	187.520.344,56	3,26	
50,08	50,60	55,70	2.368.411,81	4.476.654,94	16.242.316,02	5,10	
43,38	47,27	47,14	5.797.069,22	9.108.264,70	18.723.410,29	-0,13	
34,96	42,68	48,26	1.427.484,77	2.295.605,92	6.487.113,85	5,68	
0,00	0,00	0,00		106.020,00	128.305,41	0,00	
Overall Result	49,37	51,82	55,02	44.074.009,48	80.832.080,52	250.056.245,95	3,20

Dashboard

The dashboard shows all seven key figures on several charts. It is divided into three parts: planning, stock and EOTIF. The first part describes the planning accuracies for regions, countries and global. The stock section includes information about the stock cover (first change) and current as well as historical stock over time, valued and non-valued. The last part shows diagrams about deliveries in the supply chain, whether they are on time (or early) and whether they are in full, OTIF or EOTIF.

Root cause analysis

If a planner detects unseen data or wants to know more about the reasons for different key figures, a report-to-report interface allows going directly to a detailed list view of the needed information. An example for such a root-cause analysis is illustrated in graphic 3.

Results

Camelot provided manpower and knowledge for the specific development for Clariant. We supported the whole process: deciding where and which data is gathered, transformation and harmonization of the data in the backend and designing the dashboard itself.

Camelot ITLab GmbH

Office Mannheim
Theodor-Heuss-Anlage 12
68165 Mannheim
Germany
Phone +49 621 86298-800
Fax +49 621 86298-850
www.camelot-itlab.com

Contact

Frank Rechsteiner
Managing Partner
office@camelot-itlab.com